

Materials:

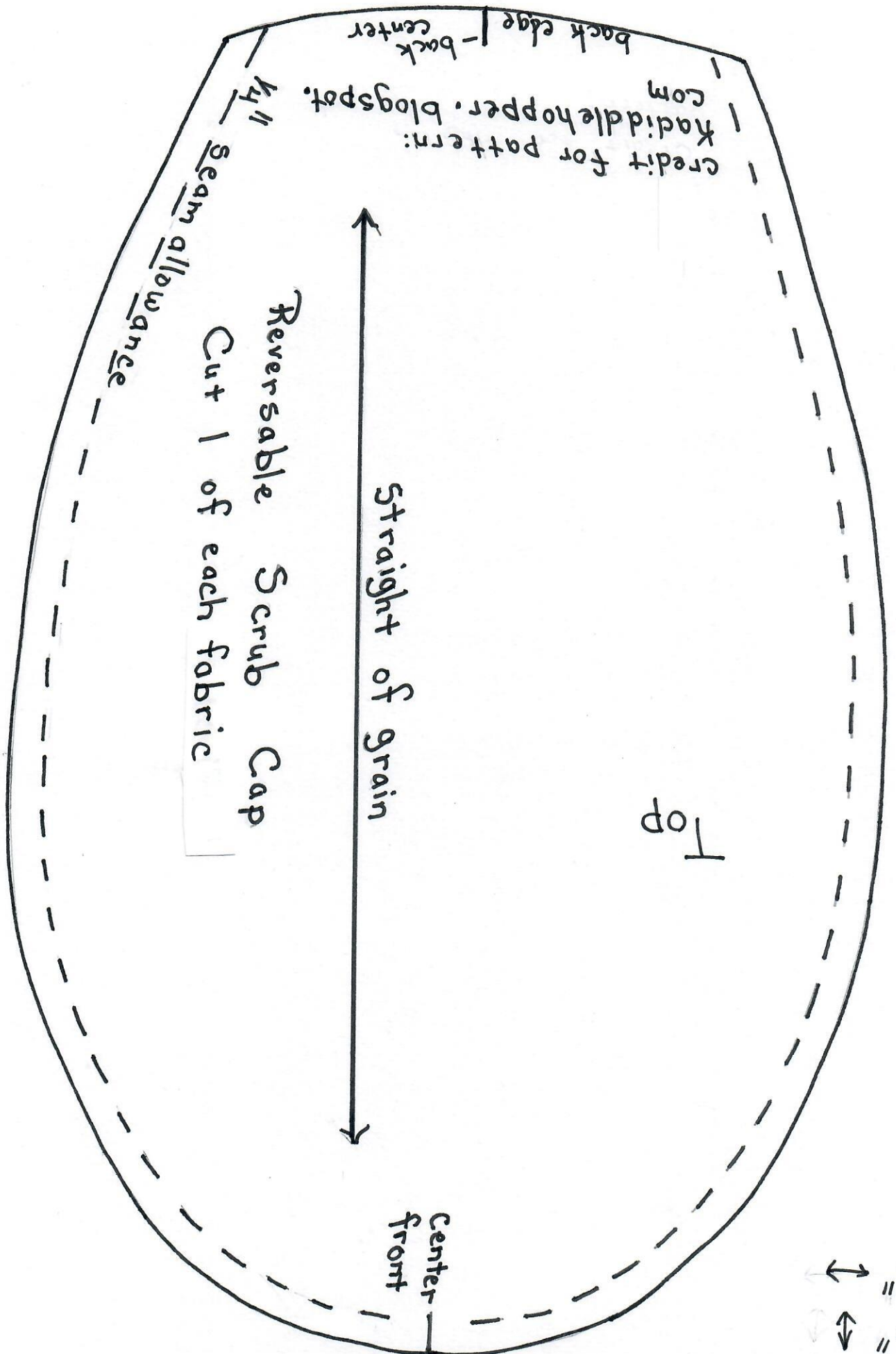
2- ½ yard (approx.) pieces of fabric

24 inches- 3/8 – ½ inch (1/4 inch is too skinny) bias tape or folded binding. This will be used for the ties. Clean finish or stitch over the ends. Cut in half.

Thread

Directions:

1. Cut out pieces. You should have two tops and two side bands.
2. Mark the centers on the front and back on the top.
3. Mark the center top on the side band.
4. Pin the side band to the top, easing as you go around the curves.
5. Sew the side band to the top using ¼ inch seam allowance. Clip curves.
6. Repeat steps for coordinating or contrasting fabric.
7. Turn one cap wrong side out and the other cap right side out and nest them right sides together.
8. Pin the two layers together along the bottom edge of the band. Leave the backs open on the side bands and tops.
9. Stitch the layers together.
10. Turn the cap inside out.
11. Press or fold under ¼ inch on the side bands and tops.
12. Insert unfinished edge of bias tape between the two bottom layers of the side bands on each side of the cap. These will become the ties for the cap.
13. Stitch back and forth a couple of times over the bias tape to secure it.
14. Stitch close the back opening.
15. Press bottom edge of the side band.



Credit for pattern:
 Kaddiddehopper.blogspot.com
 back edge / -back center

1/4" Seam allowance

Reversible Scrub Cap
 Cut 1 of each fabric

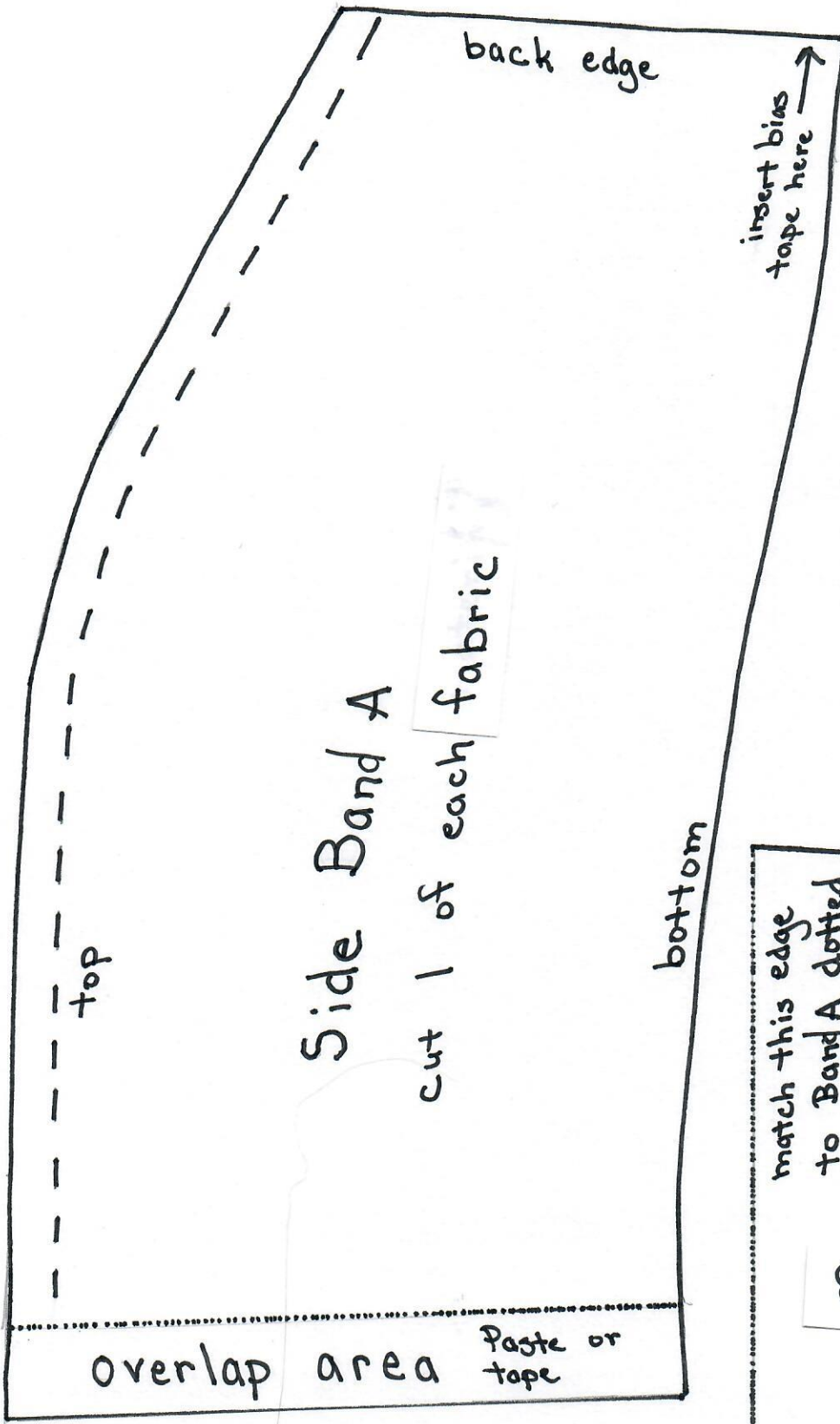
Straight of grain

Top

Center front

6" ↔
 10" ↔

and size



band size
 $10 \frac{3}{4}$ " \leftrightarrow
 4" \leftrightarrow

The band pattern would not fit onto the paper. That's the reason for two pieces.

